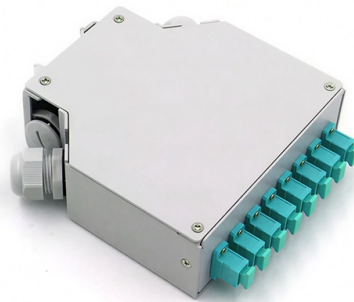


Bending Dimensions of Cable Tray Covers



Overview

45° & 90° flat bends are available for light, medium and heavy duty cable tray systems with widths ranging from 50mm - 900mm. All illustrations, descriptions and technical information included in this document are provided as indications and can cable trays are equivalent. The mechanical and electrical characteristics, tests, certifications, overall quality management, recommendations mentioned. Cable tray (or cable ladder) systems are a popular alternative to electrical conduit systems, as they have an outstanding record for dependable service, design flexibility and cost savings in commercial and industrial applications. A properly designed and installed cable tray system will provide. Hubbell's NEXTFRAME® Ladder Tray is the effective and widely used cable runway that supports and delivers bundles of cable between cabinets, racks, and closets, along walls, and suspended from ceilings. The Ladder Tray features light, rugged, tubular steel construction. Material choice T&B channel tray systems are fabricated from a corrosion-resistant metal (low-carbon steel, stainless steel or an aluminum alloy) or from a metal with a corrosion-resistant finish (zinc or epoxy). Materials and finishes available are mild. Cable Management Systems Perforated Cable Trays & Raceways Patented Roll Formed Profile Fast and Easy Installation Flexible Layout Feasibility Customized Solution Off the Shelf Availability Choice of Accessories Xtra Strength Xtra Stability Xtensive Solution X Stock NIEDAX ec Solu 10 uati, o.

Article Content

B-Line series Cable Tray Design Considerations

As an industry leader in cable tray, Eaton offers one of the widest ranges of cable management solutions available in the market today with its B-Line series portfolio. With unmatched quality and service, we

Moti Group Sheet Metal Fabrication Company India | Electrical Switch ...

Example : A hot-deep galvanized ladder cable tray having vertical inside bend of 90 degree with width 100mm, height 25mm, sheet thickness 1.6mm and bend radius 100mm will be designated as LT HG

Cable Tray Design and Standards Guide

Tray dimensions, hole spacing, and support spacing are defined. Trays and accessories must be hot dip galvanized per the listed standard. 3. Fittings and

Technical specification for FRP Cable Trays & Accessories

1 Drawings / Document Description Technical Data Sheet for FRP Cable trays & Accessories 2 GA drawings of FRP Cable Trays & Accessories 3 Manufacturing Quality Plan for FRP Cable Trays &

CABLE TRAY SYSTEMS GUIDE

The Ladder Tray features light, rugged, tubular steel construction. It is designed for mechanical support and strain relief in long runs of cable and creates a smooth gradual bend for cable. Rail and stringer

Cable Tray Dimensions Guide: Standard Sizes, Tray

Explore standard sizes by tray type, understand width and depth limits, and see how to calculate and choose compliant cable tray sizes for real projects.

Microsoft Word

Data Sheet-A, Standard Quality Plan & Typical details of Cable trays & Accessories as enclosed in the technical specification are to be appended with cover sheet bearing drawing/document number &

cable tray system

A cable tray system is an assembly of metallic cable tray sections and accessories, that forms a rigid structural system to support cables.

Cable Tray Dimensions Guide: Standard Sizes, Tray

Standard Cable Tray Dimensions Cable tray dimensions are not chosen at random. Across most global markets, they follow well-established

TYPICAL DETAILS OF CABLE TRAYS AND ACCESSORIES

FOR SPECIFIC SITE REQUIREMENTS (E.G. IRREGULAR ANGLE BENDS SUCH AS 30°/60" BENDS, ETC) AS PER SITE LAYOUT CONDITIONS, TRAY ACCESSORIES SHALL BE FABRICATED AT

CABLE TRAY SYSTEMS GUIDE

It is designed for mechanical support and strain relief in long runs of cable and creates a smooth gradual bend for cable. Rail and stringer material is 16 ga steel tubing. The NEXTFRAME® Ladder Tray is

Cable Tray Size and Dimensions: How to Choose the

Learn how to calculate the perfect cable tray size and dimensions for your electrical project. This guide covers load capacity, fill ratios, and industry

GUIDE CABLE TRAYS TECHNICAL

NEMA VE 1-2017 Specifies requirements for metal cable trays and associated fittings designed for use in accordance with the rules of Canadian Electrical Code, Part I and the National Electrical Code®

Cable Tray

Cable Ladders Straight sections of ladder type cable trays consist of two longitudinal side rails, connected by individual transverse members, or rungs, which are welded to the side rails or bolted in

Niedax, Kleinhuis & Fintech

CABLE TRAY DIMENSIONS Cable Tray's Accessories Range CB (Cross Bend) Width (W) mm 150 300 600 100 g50i 200 450 Height (H) mm Cover Model No. CN050tOGCB CN100tOGCB CN 150tOGCB

B-Line series Cable Tray Design Considerations

Our wind certification report provides you with list of acceptable B-Line series cable tray supports, fittings and covers based off of the environmental conditions, cable loading, and type of cable tray in your

Cable Tray Design and Components Guide

Tables list standard sizes and specifications for straight and bent cable trays, including width, height, thickness, materials, and finishes. Drawings show

Cable Tray Technical Guide A practical guide to product selection and ...

SOLID-BOTTOM CABLE TRAY Providing additional cable protection, solid-bottom cable tray is sometimes preferred to support and protect numerous small instrumentation and control cables.

Cable Tray Flat Bends | Cable Management | Metsec

We offer a variety of cable tray flat bends available for light, medium, and heavy duty cable tray systems in varying sizes to suit your requirements.

Cable Tray Technical Guide A practical guide to product selection and ...

In designing supports for a cable tray system, consideration should be given to the loads associated with future cable additions and any additional loading that may be applied to the cable tray system (e.g.,

Cable Tray Cover Types: Designs, Materials & Selection

A complete guide to cable tray cover types: Compare 9+ designs, material specifications (NEMA/IEC), selection factors & maintenance best practices.

Best Practice Guide to Cable Ladder and Cable Tray Systems

This guide covers cable ladder systems, cable tray systems, channel support systems and associated supports intended for the support and accommodation of cables and possibly other electrical

Niedax Cable Tray

Due to its unique composition it offers a self healing property on cut edges. HRCA (Hot Rolled and Close Annealed): Trays are made of hot roll steel which shall meet IS2062 standard. CRCA (Cold Rolled

Cable Tray Flat Bends | Cable Management | Metsec

Cable Tray Flat Bends Metsec Cable Tray Flat Bend Dimensions: 45° & 90° flat bends are available for light, medium and heavy duty cable tray systems with

Channel tray

Tray covers are available for all widths of tray. They should be installed where falling objects may damage cables or where vertical tray run is accessible by pedestrian or vehicular traffic.

LEGRAND CABLE TRAYS TECHNICAL GUIDE

Not all cable trays are equivalent. The mechanical and electrical characteristics, tests, certifications, overall quality management, recommendations mentioned in this technical guide only apply to our

Full cable tray systems specification document

B. Cable tray systems are defined to include, but are not limited to straight sections of [ladder type] [trough type] [solid bottom type] [channel type] cable trays, bends, tees, elbows, drop-outs, supports

Channel tray

The radius of the bend, whether horizontal or vertical, can be zero (non-radius), 12 in., 24 in. or greater on a custom basis. The selection requires a compromise with the considerations being available

Technical Specification for Cable tray installation and cable laying work

1. Scope :- This specification covers the following major activities; - Fabrication and installation of Mild Steel (MS) support structure for Galvanized Iron (GI) Cable tray. - Installation of perforated GI Cable

Contact Us

For more information, pricing, or custom solutions, please contact us:

Website: <https://www.ourensemeeting.es>

Email: sales@ourensemeeting.es

Phone: +34 685 473 921

Address: Calle de Alcalá, 25, 28014 Madrid, Spain

This document is for informational purposes only. Specifications subject to change without notice.

