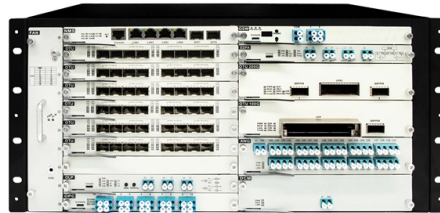


H3C switch ARP aggregation



Overview

When you configure Layer 2 link aggregation, follow these restrictions and guidelines:

- When you assign a port to an aggregation group, the recommended configuration procedure is as follows:
 - a. Use the display this command in interface view to check the following attribute configurations of the port: - Port isolation. - VLAN. - VLAN mapping.
 - b. If any of the following conditions are met, you must configure the port as a non-loadsharing port:
 - o. As shown in Figure 1, both Device A and Device B forward traffic from VLAN 10 and VLAN 20. Configure link aggregation on Device A and Device B to meet the following requirements:
 - VLAN 10 on Device A can communicate with VLAN 10 on Device B.
 - VLAN 20 on Device A can communicate with VLAN 20 on Device B.

Figure 1 Network diagram

To enable traffic from VLAN 10 and VLAN 20 to pass through Layer 2 aggregate interface Bridge-aggregation 1, perform the following tasks:

- Configure Layer 2 aggregate interface Bridge-aggregation 1 as a trunk port.
- Assign the aggregate interface to VLAN 10 and VLAN 20.

1. Configure Device A:

```
# Create VLAN 10, and assign port HundredGigE1/0/4 to VLAN 10.
<DeviceA> system-view
interface hundredgige 1/0/4 [DeviceA-HundredGigE1/0/4]
port link-mode bridge
[DeviceA-HundredGigE1/0/4] quit
vlan 10 [DeviceA-vlan10]
port hundredgige 1/0/4 [DeviceA-vlan10]
quit
# Create VLAN 20, and assign port HundredGigE1/0/5 to VLAN 20.
# Display detailed information about the link aggregation groups on Device A.
Link aggregation configuration information when the static aggregation mode is used:
display link-aggregation verbose
Loadsharing Type: Shar -- Loadsharing, NonShar -- Non-Loadsharing
Port Status: S -- Selected, U -- Unselected, I -- Individual Port: A -- Auto port FI.
```

Article Content

H3C Data Center Switches S-MLAG Best Practices-6W100

The ARP packets help the access switches refresh ARP entries and generate host routes for the servers. · When dynamic aggregation mode is used, configure the aggregate interfaces that connect

H3C S6890 Switch Series Ethernet Link Aggregation Configuration

H3C S6890 Switch Series Ethernet Link Aggregation Configuration Examples
Document version: 6W100-20190628

H3C S6850 SERIES CONFIGURATION MANUAL Pdf

Edge aggregate interface Dynamic link aggregation fails on a server-facing aggregate interface if dynamic link aggregation is configured only on the device.

download.h3c

Hier sollte eine Beschreibung angezeigt werden, diese Seite lässt dies jedoch nicht zu.

H3C S6850 & S9850 Switch Series Troubleshooting

Troubleshooting Ethernet link aggregation Link aggregation failure Symptom
Troubleshooting flowchart Solution Related commands Troubleshooting ports A

1.1 ARP Configuration Commands. H3C S5500-SI Series

Learn about various commands, including those for logging in, basic system configuration, VLAN, QinQ, link aggregation, MAC address management, MSTP, IP addressing, routing, security, multicast,

H3C S5830 Switch Series Configuration Examples

Users must pass 802.1X authentication to access the Internet. They use the H3C iNode client to initiate 802.1X authentication. Switch A uses a RADIUS server (Switch B) to perform

H3C S7500X Enterprise Core Switch Series-H3C

The H3C S7500X series switch is designed for the next-generation enterprise core networks. It adopts modular design, uses H3C's proprietary operating system Comware V7 and provides the following

H3C S7500 SERIES COMMAND MANUAL Pdf Download | ManualsLib

View and Download H3C S7500 Series command manual online. ARP. S7500 Series switch pdf manual download.

H3C Data Center Switches S-MLAG Best Practices-6W100

When any member port of the aggregation groups at the server side comes up, the server connected to the port sends ARP packets to the access switch where the port resides, so that the switch can

07-Layer 3

Home Support Switches H3C S12500 Switch Series Configure & Deploy Configuration Guides H3C S12500 Configuration Guides-Release1828P04-6W182 06-Layer 3 - IP Services Configuration Guide

Contact Us

For more information, pricing, or custom solutions, please contact us:

Website: <https://www.ourensemeeting.es>

Email: sales@ourensemeeting.es

Phone: +34 685 473 921

Address: Calle de Alcalá, 25, 28014 Madrid, Spain

This document is for informational purposes only. Specifications subject to change without notice.

