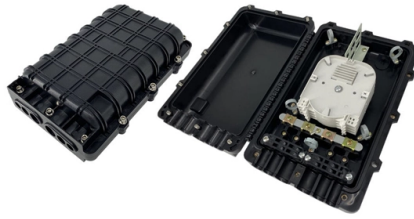


Ladder-type cable tray parameters and principles



Overview

Perforated rungs on a ladder-type tray securely fasten cables using cable ties. Additionally, their open design prevents moisture us-trations without notice. All illustrations, descriptions and technical information included in this document are provided as indications and can cable trays are equivalent. The mechanical and electrical characteristics, tests, certifications, overall quality management, recommendations mentioned. Hubbell's NEXTFRAME® Ladder Tray is the effective and widely used cable runway that supports and delivers bundles of cable between cabinets, racks, and closets, along walls, and suspended from ceilings. It is designed for. Cable tray (or cable ladder) systems are a popular alternative to electrical conduit systems, as they have an outstanding record for dependable service, design flexibility and cost savings in commercial and industrial applications. Nominal loading depth (as required): 2" (51mm), 3" (76mm), 5". in this document have been tested extens ompetent professional en completely installed, without damage either to conductors or structural system use maintain spacing or to keep cables in place when the tray is ect the minimum bend ra-dius for cables as they exit the bottom of the cable tray. A. There are several types of cable trays, including ladder, perforated, solid bottom, basket, and channel trays. What is Cable Tray?

A cable tray is a unit, or set of units.

Article Content

Types of Cable Trays: Ladder, Perforated, Basket, Solid

Cable trays support insulated electrical cables in industrial and commercial settings. There are several types of cable trays, including ladder,

Cable Tray Type Selection

The only reason to select a ventilated trough cable tray over a ladder type cable tray is aesthetics. No drooping of small cables is visible. The ventilated trough cable tray does provide more support to the

Combustion characteristics and heat transfer mechanisms analysis of ...

Consequently, the width parameter in the HRR calculation equation for cable tray fires under external heat sources was modified to be the sum of the cable base circumference. This

What is a Ladder Type Cable Tray? Features, Sizes

Explore everything about ladder cable trays - from their components to unique features, sizes, and comparison with other cable trays.

Cable Tray vs. Cable Ladder

Cable Tray vs. Cable Ladder: Understanding the Differences Introduction In electrical installations, cables need organized support and protection. Two common solutions are cable trays and cable

Enduro_Specification_Ladder Cable Tray_04-30-21

A. The fiberglass ladder-type cable tray system shall be manufactured - pultrusion, compression molded, resin transfer molded and/or fabricated by Enduro Composites, Inc., located at 16602 Central Green

B-Line series Cable Tray Design Considerations

Our wind certification report provides you with list of acceptable B-Line series cable tray supports, fittings and covers based off of the environmental conditions, cable loading, and type of cable tray in your

CABLE TRAYS, CABLE LADDERS CABLE SUPPORT SYSTEMS& CABLE

In building electrical wiring, a strengthened type cable tray system is utilized to support insulated electrical wires used for power distribution, control, and communication. As an alternative to exposed

Electrical Cable Tray | Ladder Type Cable Tray

Ramdev Steel Industries is a trusted manufacturer of electrical cable trays, specializing in high-quality ladder type cable trays for efficient cable management

LEGRAND CABLE TRAYS TECHNICAL GUIDE

Not all cable trays are equivalent. The mechanical and electrical characteristics, tests, certifications, overall quality management, recommendations mentioned in this technical guide only apply to our

The Professional Guide to Industrial Ladder Tray Systems

Master industrial cable management with our comprehensive guide to ladder tray systems. Learn about load capacities, material selection, and

Cable tray systems and cable ladder systems for cable management

9.5 Cable tray systems or cable ladder systems may include system components for the segregation of cables. These shall be adequately secured to other system components.

What Makes a Ladder Cable Tray an Ideal Option for Cable

What is the application of ladder type cable tray? Ladder type cable trays are used in various applications: Industrial Facilities: In manufacturing plants, power plants, and other heavy-duty

Best practice guide to cable ladder and cable tray

The following recommendations are intended to be a practical guide to ensure the safe and proper installation of cable ladder and cable tray systems

Types of Cable Trays: Ladder, Perforated, Basket, Solid

Explore all types of cable trays—ladder, perforated, basket, solid, and channel. Learn their uses, materials, pros, cons, and key differences.

Difference Between a Cable Ladder and Cable Tray

What is a Cable Ladder? A cable ladder, also known as a ladder cable tray, is a support system that consists of two longitudinal side rails connected by individual

Types of Cable Trays - Advantages, Applications and Sizes

Explore the types of cable trays, their advantages, applications, and standard sizes. Learn how they improve cable management and support various industries.

Enduro_Specification_Ladder Cable Tray_04-30-21

Straight section ladder tray shall be prefabricated structures made from fiberglass reinforced plastic, consisting of two longitudinal members (side rails) connected by transverse rungs, meeting all the

CABLE TRAY SYSTEMS GUIDE

The Ladder Tray features light, rugged, tubular steel construction. It is designed for mechanical support and strain relief in long runs of cable and creates a smooth gradual bend for cable. Rail and stringer

Types of cable Trays | Ladder cable tray | industrylearners

If cable trays are being installed where working space is a problem, hand access through the cable tray bottom may help to facilitate the installation of

What is the difference between cable ladders and cable

When it comes to cable ladders and cable trays there are a few fundamental distinctions that should make your choice of support easier.

Best Practice Guide To Cable Ladder and Cable Trays

Layout 1 - Best Practice guide to cable Ladder and Cable Trays system - Free download as PDF File (.pdf) or read online for free.

CABLE TRAY, CABLE LADDER, CABLE TRUNKING CATALOGUE

Rung spacing: 300mm. Material: Mild steel sheet / PO steel sheet. Constructed Type: MIG welding. er coating / Ho Horizontal Tee.

Microsoft Word

With all the choices in cable trays styles, ladder, ventilated, solid bottom and wire basket, it can be difficult to know which is the right one for your application. This bulletin will help provide a few

Cable Tray Technical Guide A practical guide to product selection and ...

In designing supports for a cable tray system, consideration should be given to the loads associated with future cable additions and any additional loading that may be applied to the cable tray system (e.g.,

Guide to cable support systems

Universal systems for cable support structures are used for small loads. The systems are suspended from the ceiling with threaded rods, stand-off brackets allow raised floor mounting of cable trays,

Contact Us

For more information, pricing, or custom solutions, please contact us:

Website: <https://www.ourensemeeting.es>

Email: sales@ourensemeeting.es

Phone: +34 685 473 921

Address: Calle de Alcalá, 25, 28014 Madrid, Spain

This document is for informational purposes only. Specifications subject to change without notice.

