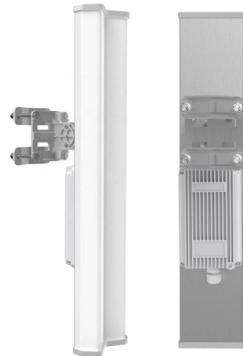


# On-site requirements for secondary distribution boxes



## Overview

Check for proper IP/NEMA ratings and material quality. Ensure safe placement: install in dry, accessible areas with good ventilation and at appropriate height (typically ~1. Practice good wiring: secure grounding, neat cable management, proper insulation, and correct wire gauge and. This document represents the minimum requirements and specifications for the installation of the electrical underground distribution systems fed from padmounted transformation, serving Secondary Service Accounts, to be transferred to Oncor Electric Delivery Company ownership. 1 This document is one of a suite of documents intended for designing and installing substations for adoption, and/or for use, by Scottish and Southern Electricity Networks (SSEN) Designers and Installers, covering the following situations. They shall provide sufficient volume to accommodate expected flows. Load. After preliminarily determining the type and specifications of the distribution box, the relevant technical parameters and usage requirements should be provided to the manufacturer for final confirmation.

## Article Content

Microsoft Word

For construction and operation of meter room, the service conditions and system requirements shall be as given in the latest revision of SEC General Requirements For All Equipment / Material

A Definitive Guide To Distribution Boxes

Power distribution boxes are beneficial because they eliminate the requirement for each output device to be connected directly to the power source. As a result, there's no reason to utilize

The Ultimate Guide to Distribution Box Types

Discover the key types of distribution boxes with NUOMAK's comprehensive guide. Learn about Main Distribution Boards (MDB), Consumer Units, Transfer

How to Improve the Installation Quality of Distribution Boxes

Learn key methods to enhance distribution box installation quality, including location, height, wiring, and safety compliance.

How to Install a Distribution Box—A Comprehensive

Before starting the installation, finding a proper place for putting the distribution box is crucial, because it largely decides the safety and convenience

Secondary Distribution Box

The SDB can be fitted with terminal blocks for custom wiring. The Secondary Distribution Box (SDB) is provided in powder coated black finish.

How To Maximize Worksite Safety When Using Power Distribution Boxes

Power distribution boxes are designed to be rugged, durable, and dependable in even the most challenging situations and outdoor environments. Safety Standards for Temporary Power

Specifications for Electrical Underground Distribution Systems for Pad ...

This document represents the minimum requirements and specifications for the installation of the electrical underground distribution systems fed from padmounted transformation, serving Secondary

Understanding Distribution Boxes: A Comprehensive Guide

A distribution box, also known as a power distribution box or electrical distribution box, is used to distribute electrical power safely to multiple

Power Distribution Boxes Explained Simply

Discover the essentials of a Power Distribution Box—how it works, key types, benefits, and tips to ensure safe, efficient electrical power management.

### Secondary Distribution Substations; Common Clauses

Where the substations are within a secured site or within a building, rights will be required and provision made to permit access through the site, or through common parts of the building.

### Cautions and Requirements for Installation of

Distribution box is a low-voltage distribution device which assembles switchgear, measuring instruments, protective appliances and auxiliary equipment in a closed

### Key Points Of Installation And Collocation Of Distribution Box In ...

If they are combined in the same distribution box, power and lighting lines should be set separately. 7. The wire inlets and outlets in the distribution box and switch box shall be set at the lower bottom of

### Detailed introduction of safety requirements for distribution box

Safety control requirements for distribution box: 1. The low-voltage power supply system at the construction site shall be equipped with a general distribution box, a distribution box and a

### Latest Requirements for Distribution Box Installation under the US

The latest NEC updates prioritize adaptive solutions for modern energy demands. With homes now packing solar arrays, EV chargers, and smart-home systems, distribution boxes work

### Manual for On-Site Sewage Management Systems

Distribution and dosing devices include distribution boxes, flow splitters, siphons, pumps and other flow diversion devices. These devices shall be of sound construction, water tight and not

### The Meaning and Function of Primary, Secondary, and Tertiary ...

The terms primary, secondary, and tertiary distribution boxes are relative. Let's make an example for clarity: A newly constructed residential area in

### What is the difference between primary, secondary and tertiary ...

1. The first-level distribution box is relative to a certain building or factory, which is the first-level distribution box of the cable directly drawn from the substation or municipal power distribution station.

### Secondary Distribution Boxes

For building owners, architects, construction managers, facilities engineers, and network administrators alike, ACS modular zone distribution systems are the intelligent choice. choice. The ACS Intelligent

Requirements for distribution box at construction site

1□ The manufacture and installation of distribution box and switch box shall meet the following requirements: 1. The distribution box shall be made of iron plate or other fire-proof insulating

Technical Requirements for Distribution Box in Electrical Industry

16. The distribution box system drawings are shown in the attached drawings. The above is the technical requirements of distribution box. On the premise of ensuring safety, the distribution box is still

The installation requirements for the distribution box

Site selection requirements: The distribution box should be installed in an area close to the power supply to reduce power loss and ensure safety. Avoid

How to Install a Cable Distribution Box Safely and

In modern electrical systems, cable distribution boxes (also known as electrical distribution boxes or distribution boxes) play a crucial role as the key

## Contact Us

For more information, pricing, or custom solutions, please contact us:

Website: <https://www.ourensemeeting.es>

Email: [sales@ourensemeeting.es](mailto:sales@ourensemeeting.es)

Phone: +34 685 473 921

Address: Calle de Alcalá, 25, 28014 Madrid, Spain

This document is for informational purposes only. Specifications subject to change without notice.

