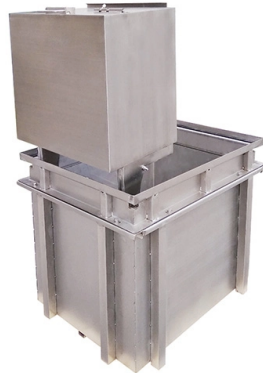


# Which type of Dutch ladder-type cable tray is best



## Overview

Cable Weight: Opt for ladder-type cable tray for heavy cables; perforated type cable tray for lighter ones. Ladder Type Cable Tray The ladder type cable tray consists of two side rails connected by rungs, allowing excellent airflow around cables. Each cable tray type performs a different function and comes in various materials such as aluminum, galvanized steel, and FRP. These rungs are spaced at regular intervals and provide a structure that resembles a ladder—hence the name. From a scientific and mechanical perspective, cable tray types differ in three key areas: A ladder cable tray consists of two longitudinal side rails connected by transverse rungs, forming a ladder structure. Ladder type cable tray, also called cable ladder or HDG cable ladder, is the most economical cable tray which is made with prefabricated C channel metal structure processed by galvanised and hot dipped galvanised method and connected by parallel transverse rungs to provide maximum ventilation in. Choosing the right cable management system is crucial for safe, organised, and cost-effective installations.



## Article Content

Types of Cable Trays: Ladder, Perforated, Basket, Solid

Explore all types of cable trays—ladder, perforated, basket, solid, and channel. Learn their uses, materials, pros, cons, and key differences.

Best Practice Guide to Cable Ladder and Cable Tray

Cable ladder and cable tray systems The following recommendations are intended to be a practical guide to ensure the safe and proper installation of

Top 7 Types of Cable Trays and Their Applications

Discover the top 7 types of cable trays including Ladder, Perforated, and Wire Mesh. Learn their applications and benefits for efficient cable

Top 7 Types of Cable Trays and Their Applications

Conclusion Understanding the different types of cable trays and their applications is crucial for designing safe, efficient, and reliable electrical systems.

Ladder Type - GM ENGINEERS

Ladder type cable trays are a reliable, cost-effective, and durable cable management solution used in various industries. Their robust design, flexibility, and ease of installation make them an ideal choice

Perforated Cable Tray Vs Ladder Type Cable Tray: What to Choose?

Compare Perforated Cable Trays vs Ladder Type Cable Trays. Discover their differences, benefits, and how to choose the right one for your project needs.

Best Practice Guide to Cable Ladder and Cable Tray Systems

Cable ladder systems and cable tray systems are designed for use as supports for cables and not as enclosures giving full mechanical protection. They are not intended to be used as ladders, walk ways

Cable Trays: How to Choose the Right Type for Your

Conclusion Cable trays are an essential component of any cable management system, providing support, protection, and organization for cables.

What are the Five main types of cable trays?

Ladder type cable tray is a type of cable management system that is designed to support and route a large number of cables in a structured and

What are the Five main types of cable trays?

Ladder type cable trays are commonly used in industrial facilities, data centers, commercial buildings, and infrastructure projects, where the organized

Cable Ladder vs Cable Tray | Which Do You Need For

Require a support system for your cables that best suits the needs of your project? Then you may be deciding between a cable ladder vs cable tray

Best Practice Guide to Cable Ladder and Cable Tray Systems

Introduction This publication is intended as a practical guide for the proper and safe\* installation of cable ladder systems, cable tray systems, channel support systems and associated supports.

Cable Tray vs Cable Basket vs Cable Ladder vs Cable

Compare cable tray, basket, ladder & trunking systems. Learn the pros, cons, and best uses for each type, with links to our UK product ranges.

Types of Cable Trays and Their Benefits

We will discuss each type in detail: 1. Ladder Cable Tray. It consists of two side rails with cross rungs joining them, much like a ladder. Allows

7 Types of Cable Trays: How to Choose the Right One

Selecting the correct cable tray type is not arbitrary—it depends on a combination of cable characteristics, environmental conditions, and installation

Types of cable Trays | Ladder cable tray |industrylearners

If cable trays are being installed where working space is a problem, hand access through the cable tray bottom may help to facilitate the installation of

What are the 5 basic cable tray types?

Cable Type and Sensitivity: Determine the type of cables to be installed and their sensitivity to heat and EMI. Solid bottom trays are suitable for sensitive cables, while ladder trays provide excellent heat

Cable Tray VS Cable Ladder: What is the Difference

Difference between Cable Tray & Cable Ladder. Unveiling the distinctions! Dive into our comprehensive guide to understand which option suits

Cable Tray Type Selection

What type of cable tray should be used for the main runs of a cable tray wiring system? The cable tray types to choose from are ladder, ventilated trough, or solid bottom. What are the reasons for

Difference Between a Cable Ladder and Cable Tray

Explore the key differences between a cable ladder and cable tray. Learn about their design, applications, advantages, and ideal use cases for efficient cable

### Cable Tray vs Ladder vs Wire Mesh: Selection Guide

Not all cable trays are created equal. Three families dominate most projects— ladder, perforated, and wire mesh. Each balances strength, ventilation, and flexibility differently. Choosing

What is the difference between cable ladders and cable

With a range of support solutions available, it might be difficult to know which option is best suited for your application. When it comes to cable ladders and cable trays

Which Steel Cable Tray Type is Best? A Look at

Explore perforated, ladder, wire mesh & flexible steel cable trays. Find the best tray for ventilation, strength & cable protection.

Cable Trays for Data Centers: Perforated, Ladder or Wire Mesh

Choosing the right cable tray is key for data centers. Explore ladder, perforated, and wire mesh options for safe and effective cable management.

## Contact Us

For more information, pricing, or custom solutions, please contact us:

Website: <https://www.ourensemeeting.es>

Email: [sales@ourensemeeting.es](mailto:sales@ourensemeeting.es)

Phone: +34 685 473 921

Address: Calle de Alcalá, 25, 28014 Madrid, Spain

This document is for informational purposes only. Specifications subject to change without notice.

